

AMC

d his

(FILE 'HOME' ENTERED AT 18:42:42 ON 30 NOV 2006)  
FILE 'REGISTRY' ENTERED AT 18:43:37 ON 30 NOV 2006  
E "CHOLESTEROL SULFATE"/CN 25  
L1 1 S E3  
FILE 'REGISTRY' ENTERED AT 18:44:16 ON 30 NOV 2006  
L2 STR 1256-86-6  
L3 33 S L2 FAM FUL  
FILE 'CAPLUS' ENTERED AT 18:44:37 ON 30 NOV 2006  
L4 750 S L3  
L5 112 S L4 AND AD<20010131 AND PATENT/DT  
L6 507 S L4 AND PY<=2001 AND NONPATENT/DT  
L7 619 S L5 OR L6  
L8 243 S L7 AND (SKIN OR TOPICAL? OR COSMET? OR DERMA? OR EPIDERM?)  
L9 170 S L8 AND (SKIN OR TOPICAL? OR COSMET? OR DERMA? OR EPIDERM?)/AB  
L10 0 S L9 AND EXFOLIA?  
FILE 'REGISTRY' ENTERED AT 18:47:56 ON 30 NOV 2006  
E "CHOLESTEROL SULFATE"/CN 25  
L11 1 S E5  
L12 1 S L11 EXA SAM  
FILE 'CAPLUS' ENTERED AT 18:49:09 ON 30 NOV 2006  
S 6614-96-6/REG#  
FILE 'REGISTRY' ENTERED AT 18:49:09 ON 30 NOV 2006  
L13 1 S 6614-96-6/RN  
FILE 'CAPLUS' ENTERED AT 18:49:10 ON 30 NOV 2006  
L14 20 S L13  
L15 6 S L14 AND AD<20010131 AND PATENT/DT  
L16 11 S L14 AND PY<=2001 AND NONPATENT/DT  
L17 17 S L15 OR L16  
FILE 'REGISTRY' ENTERED AT 18:52:09 ON 30 NOV 2006  
E "GLUCOSAMINE, N-ACETYL"/CN 25  
E "ACETYLGLUCOSAMINE"/CN 25  
L18 1 S E3  
L19 1 S L18 EXA SAM  
E "ACETYLGLUCOSAMINE"/CN 25  
E "ACETYL GALACTOSAMINE"/CN 25  
E "GALACTOSAMINE"/CN 25  
L20 1 S E9  
L21 1 S L20 EXA SAM  
FILE 'CAPLUS' ENTERED AT 18:54:35 ON 30 NOV 2006  
S L8 AND ( 1811-31-0/REG# OR 7512-17-6/REG#)  
FILE 'REGISTRY' ENTERED AT 18:55:15 ON 30 NOV 2006  
L22 1 S 7512-17-6/RN  
FILE 'CAPLUS' ENTERED AT 18:55:15 ON 30 NOV 2006  
L23 6394 S L22  
FILE 'REGISTRY' ENTERED AT 18:55:16 ON 30 NOV 2006  
L24 1 S 1811-31-0/RN  
FILE 'CAPLUS' ENTERED AT 18:55:16 ON 30 NOV 2006  
L25 2904 S L24  
L26 0 S L8 AND ( L25 OR L23 )

L27 161 S L9 AND (CERAMIDE OR CHOLESTEROL)  
L28 112 S L9 AND (CERAMIDE OR CHOLESTEROL)/AB

FILE 'CAPLUS' ENTERED AT 19:11:08 ON 30 NOV 2006  
S 1811-31-0/REG# OR 7512-17-6/REG#

FILE 'REGISTRY' ENTERED AT 19:11:08 ON 30 NOV 2006  
L29 1 S 7512-17-6/RN

FILE 'CAPLUS' ENTERED AT 19:11:09 ON 30 NOV 2006  
L30 6394 S L29

FILE 'REGISTRY' ENTERED AT 19:11:09 ON 30 NOV 2006  
L31 1 S 1811-31-0/RN

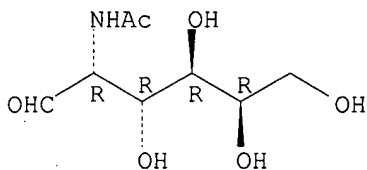
FILE 'CAPLUS' ENTERED AT 19:11:10 ON 30 NOV 2006  
L32 2904 S L31  
L33 7731 S L32 OR L30  
L34 587 S L33 AND AD<20010131 AND PATENT/DT  
L35 5599 S L33 AND PY<=2001 AND NONPATENT/DT  
L36 6186 S L34 OR L35  
L37 248 S L36 AND (SKIN OR DERMA? OR COSMET? OR TOPICAL? OR EPIDERM?)  
L38 198 S L37 AND (SKIN OR DERMA? OR COSMET? OR TOPICAL? OR EPIDERM?)/A  
L39 53 S L38 AND (TOPICAL? OR COSMET?)  
L40 16 S L39 AND (AMINO OR SUGAR)/AB

FILE 'CAPLUS, MEDLINE, EMBASE' ENTERED AT 19:18:27 ON 30 NOV 2006  
L41 453 S ((MAES, D?) OR (MAES D?) OR (ZECCHINO, J?) OR (ZECCHINO J?))/  
L42 114 S L41 AND (SKIN OR TOPICAL? OR COSMET? OR DERMA? OR EPIDERM?)  
L43 6 S L42 AND CHOLESTEROL  
L44 6 DUP REM L43 (0 DUPLICATES REMOVED)  
L45 3 S L42 AND (AMINO OR SUGAR)  
L46 3 DUP REM L45 (0 DUPLICATES REMOVED)

=>

L21 ANSWER 1 OF 1 REGISTRY COPYRIGHT 2006 ACS on STN  
 RN 1811-31-0 REGISTRY  
 ED Entered STN: 16 Nov 1984  
 CN D-Galactose, 2-(acetylamino)-2-deoxy- (9CI) (CA INDEX NAME)  
 OTHER CA INDEX NAMES:  
 CN Galactosamine, N-acetyl-, D- (6CI)  
 CN Galactose, 2-acetamido-2-deoxy-, D- (8CI)  
 OTHER NAMES:  
 CN 2-(Acetylamino)-2-deoxy-D-galactose  
 CN 2-Acetamido-2-deoxy-D-galactose  
 CN 2-Deoxy-2-acetamido-D-galactose  
 CN 2-N-Acetyl-D-galactosamine  
 CN 36: PN: US20060183155 PAGE: 8 claimed sequence  
 CN D-N-Acetylgalactosamine  
 CN GalNAc  
 CN N-Acetyl-2-amino-2-deoxy-D-galactose  
 CN N-Acetyl-2-amino-2-deoxygalactose  
 CN N-Acetyl-D-galactosamine  
 CN N-Acetylchondrosamine  
 CN N-Acetylgalactosamine  
 FS STEREOSEARCH  
 DR 3398-89-8  
 MF C8 H15 N O6  
 CI COM  
 LC STN Files: AGRICOLA, ANABSTR, BEILSTEIN\*, BIOSIS, CA, CAOLD, CAPLUS,  
 CASREACT, CHEMCATS, CHEMLIST, CIN, CSCHEM, IFICDB, IFIPAT, IFIUDB, IPA,  
 PROMT, TOXCENTER, USPAT2, USPATFULL  
 (\*File contains numerically searchable property data)  
 Other Sources: EINECS\*\*  
 (\*\*Enter CHEMLIST File for up-to-date regulatory information)

Absolute stereochemistry.

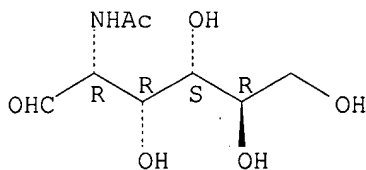


\*\*PROPERTY DATA AVAILABLE IN THE 'PROP' FORMAT\*\*

2900 REFERENCES IN FILE CA (1907 TO DATE)  
 244 REFERENCES TO NON-SPECIFIC DERIVATIVES IN FILE CA  
 2904 REFERENCES IN FILE CAPLUS (1907 TO DATE)  
 40 REFERENCES IN FILE CAOLD (PRIOR TO 1967)

L19 ANSWER 1 OF 1 REGISTRY COPYRIGHT 2006 ACS on STN  
 RN 7512-17-6 REGISTRY  
 ED Entered STN: 16 Nov 1984  
 CN D-Glucose, 2-(acetylamino)-2-deoxy- (9CI) (CA INDEX NAME)  
 OTHER CA INDEX NAMES:  
 CN D-Glucose, 2-acetamido-2-deoxy- (8CI)  
 OTHER NAMES:  
 CN 2-Acetamido-2-deoxy-D-glucose  
 CN 2-Acetamido-2-deoxyglucose  
 CN 2-Acetamido-D-glucose  
 CN 2-Acetylamino-2-deoxy-D-glucose  
 CN **Acetylglucosamine**  
 CN D-N-Acetylglucosamine  
 CN Marine Sweet  
 CN N-Acetyl-2-amino-2-deoxy-D-glucose  
 CN N-Acetyl-2-amino-2-deoxyglucose  
 CN N-Acetyl-D-glucosamine  
 CN N-Acetylglucosamine  
 CN NSC 524344  
 FS STEREOSEARCH  
 DR 7132-76-5, 134-61-2, 173382-53-1, 98632-70-3  
 MF C8 H15 N O6  
 CI COM  
 LC STN Files: ADISNEWS, AGRICOLA, ANABSTR, BEILSTEIN\*, BIOSIS, BIOTECHNO,  
 CA, CABA, CAOLD, CAPLUS, CASREACT, CHEMCATS, CHEMLIST, CIN, CSCHEM,  
 EMBASE, IFICDB, IFIPAT, IFIUDB, IPA, MEDLINE, MRCK\*, MSDS-OHS,  
 NAPRALERT, PIRA, PROMT, RTECS\*, SPECINFO, TOXCENTER, USPAT2, USPATFULL  
 (\*File contains numerically searchable property data)  
 Other Sources: DSL\*\*, EINECS\*\*, TSCA\*\*  
 (\*\*Enter CHEMLIST File for up-to-date regulatory information)

Absolute stereochemistry.

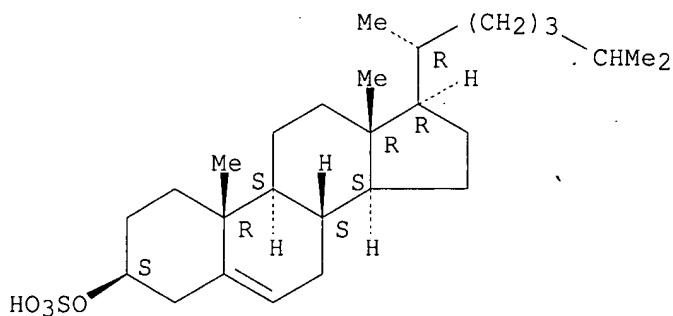


\*\*PROPERTY DATA AVAILABLE IN THE 'PROP' FORMAT\*\*

6374 REFERENCES IN FILE CA (1907 TO DATE)  
 479 REFERENCES TO NON-SPECIFIC DERIVATIVES IN FILE CA  
 6394 REFERENCES IN FILE CAPLUS (1907 TO DATE)  
 1 REFERENCES IN FILE CAOLD (PRIOR TO 1967)

L12 ANSWER 1 OF 1 REGISTRY COPYRIGHT 2006 ACS on STN  
 RN 6614-96-6 REGISTRY  
 ED Entered STN: 16 Nov 1984  
 CN Cholest-5-en-3-ol (3 $\beta$ )-, hydrogen sulfate, potassium salt (9CI) (CA  
 INDEX NAME)  
 OTHER CA INDEX NAMES:  
 CN Cholesterol, hydrogen sulfate, potassium salt (8CI)  
 CN Cholesteryl potassium sulfate (6CI, 7CI)  
 OTHER NAMES:  
 CN Cholesterol 3-O-(hydrogen sulfate) potassium salt  
 CN **Cholesterol sulfate potassium salt**  
 CN Cholesteryl sulfate potassium salt  
 CN Potassium cholesterol sulfate  
 FS STEREOSEARCH  
 DR 127579-90-2  
 MF C27 H46 O4 S . K  
 LC STN Files: BEILSTEIN\*, CA, CAOLD, CAPLUS, CHEMCATS, CSCHEM, TOXCENTER,  
 USPATFULL  
 (\*File contains numerically searchable property data)  
 CRN (1256-86-6)

Absolute stereochemistry.



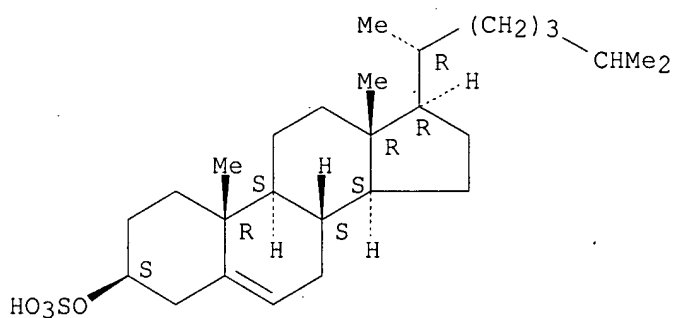
● K

\*\*PROPERTY DATA AVAILABLE IN THE 'PROP' FORMAT\*\*

20 REFERENCES IN FILE CA (1907 TO DATE)  
 20 REFERENCES IN FILE CAPLUS (1907 TO DATE)  
 3 REFERENCES IN FILE CAOLD (PRIOR TO 1967)

L1 ANSWER 1 OF 1 REGISTRY COPYRIGHT 2006 ACS on STN  
 RN 1256-86-6 REGISTRY  
 ED Entered STN: 16 Nov 1984  
 CN Cholest-5-en-3-ol (3 $\beta$ )-, hydrogen sulfate (9CI) (CA INDEX NAME)  
 OTHER CA INDEX NAMES:  
 CN Cholesterol, hydrogen sulfate (7CI, 8CI)  
 OTHER NAMES:  
 CN 5-Cholesten-3 $\beta$ -yl sulfate  
 CN Cholest-5-en-3 $\beta$ -ol sulfate  
 CN Cholesterol 3-sulfate  
 CN **Cholesterol sulfate**  
 CN Cholesteryl sulfate  
 FS STEREOSEARCH  
 DR 1491-95-8, 127565-97-3  
 MF C27 H46 O4 S  
 CI COM  
 LC STN Files: AGRICOLA, ANABSTR, BEILSTEIN\*, BIOSIS, BIOTECHNO, CA, CAOLD,  
 CAPLUS, CASREACT, CBNB, CHEMCATS, CIN, CSCHEM, DDFU, DRUGU, EMBASE, IPA,  
 MEDLINE, NAPRALERT, PROMT, TOXCENTER, USPAT2, USPATFULL  
 (\*File contains numerically searchable property data)

Absolute stereochemistry.



\*\*PROPERTY DATA AVAILABLE IN THE 'PROP' FORMAT\*\*

646 REFERENCES IN FILE CA (1907 TO DATE)  
 46 REFERENCES TO NON-SPECIFIC DERIVATIVES IN FILE CA  
 649 REFERENCES IN FILE CAPLUS (1907 TO DATE)  
 13 REFERENCES IN FILE CAOLD (PRIOR TO 1967)